

Midnight Cry

Words and Music by
GREG DAY and CHUCK DAY
Arranged by Tom Fettke

Freely, with great anticipation ♩ = ca. 56

CD: 2*

N.C.

8^{va}

pp

5

8^{va}

mp

rit.

Strict tempo, faster ♩ = ca. 72

10 very little vibrato
Unison mp

I hear the sound

Unison mp

G^{sus} G 10 G²

*CD POINTS: Vocal Demo, CD:1; Split-channel, CD:2-6; Stereo Trax, CD:7

Copyright 1986 Bridge Building Music/BMI. All rights reserved.
Used by permission of Brentwood-Benson Music Publishing, Inc.

of a might-y rush-ing wind, _____ And it's

*G*⁴ *A*^m/*G* *G*² *G*⁴

14 clos - er now _____ than it's ev - er been;

Divisi *Divisi*

14 *G*² *G*⁴ *G*² *A*^m7

mf *mf* 18 *cresc.* *cresc.*

I can al - most hear the trum - pet

C/*D* 18 *G* *B*^m7 *cresc.*

decresc. Unison mf

as Ga-briel sounds the call, At the

decresc. Unison mf

C D G D Em Em7 Cm6 Eb

decresc.

22 CD: 3

mid- night cry, we'll be go - in'

22 mf

G D C D

Divisi cresc. 26 f

home. When Je - sus steps out

Divisi cresc. f

G C D G Bm7

cresc.

on a cloud to call His chil- dren,

C D G

The dead in Christ shall rise to meet Him in the

C² G C D D¹³ C B^m B^{m7} E^m E^m D E^m C⁴

air; And then those that re - main

C D D C G B^{m7}

8

decresc. Unison *mf* 7

shall be quick-ly changed, At the

decresc. Unison

C C/D G/D B/D₄ E_m E_m⁷ C_m⁶/_{E_b}

decresc.

38

mid - night cry

At the mid - night cry

when Je - sus comes a -

mf Divisi

Divisi

38 G/D C/D

mf

42

gain.

42

G_{sus} G G/F A_b/_{E_b}

cresc. *f*

$\text{D}\flat/\text{E}\flat$ $\text{E}\flat/\text{D}\flat$ Cm^7 Fm^7 $\text{B}\flat\text{m}^7$ $\text{D}\flat/\text{E}\flat$
 decresc. slight rit.

(47) Solo a tempo *mp*
 I look a-round me I see proph-e-cies _____ ful -
 $\text{A}\flat^2$ $\text{A}\flat^4$ $\text{B}\flat\text{m}/\text{A}\flat$
mp a tempo

cresc. *mf* (51)
 filled, _____ And signs of the times, _____
 Choir *mp*
 Oo _____
 $\text{A}\flat^2$ $\text{A}\flat^4$ (51) $\text{A}\flat^2$
 cresc. *mf*

they're ap-pear-ing ev - ery - where.

Oo

Ab⁴ Ab² Bbm⁷

cresc.

This system contains the first vocal line with lyrics, a piano accompaniment, and a chord chart. The vocal line starts with a rest followed by a melodic phrase. The piano accompaniment features a steady eighth-note bass line and a treble line with chords. The chord chart shows Ab⁴, Ab², and Bbm⁷. A crescendo marking is present above the piano part.

I can al - most hear the Fa - ther

Ah

D^b E^b (55) A^b C m⁷

f mf

This system contains the second vocal line with lyrics, a piano accompaniment, and a chord chart. The vocal line begins with a rest, followed by a melodic phrase starting with a forte (f) dynamic. The piano accompaniment continues with a similar texture. The chord chart includes D^b E^b, (55) A^b, and C m⁷. Dynamics of mf and f are indicated.

as He says, "Son, get your chil

decresc.

Ah

decresc.

decresc.

Db Db Eb Ab Eb C E

decresc.

dren." And at the mid- night cry,

mf (59)

Unison mp

At the mid- night cry

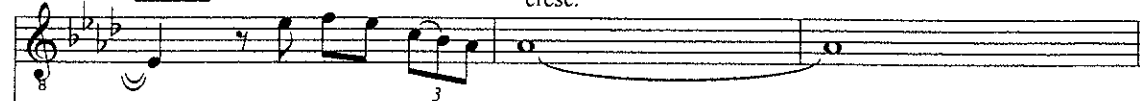
Unison mp

Fm Fm7 Dbm6 Fb (59) Ab Eb

mf

CD: 5

cresc.



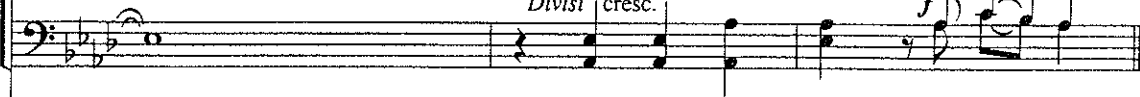
the bride of Christ will rise.

Divisi cresc.



we will a - rise. When Je - sus

Divisi cresc.



$\frac{D\flat}{E\flat}$

$A\flat$

$\frac{D\flat}{E\flat}$



cresc.

63



steps out

on a cloud to call His

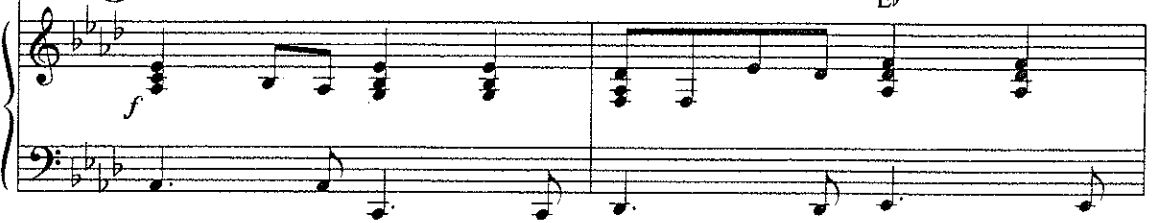
63

$A\flat$

Cm^7

$D\flat$

$\frac{D\flat}{E\flat}$



chil - dren, The dead in Christ shall

Chords: A^b , $\begin{matrix} D^b2 \\ A^b \end{matrix}$, $\begin{matrix} D^b \\ E^b \end{matrix}$, $\begin{matrix} E^b6 \\ D^b \end{matrix}$

rise to meet Him in the

Chords: Cm , Cm^7 , Fm , $\begin{matrix} Fm^7 \\ E^b \end{matrix}$, $\begin{matrix} Fm \\ D \end{matrix}$

air; And then those that re -

Chords: $\begin{matrix} D^b \\ E^b \end{matrix}$, E^b , $\begin{matrix} D^b \\ E^b \end{matrix}$

71

main shall be quick - ly

71 A^b Cm^7 D^b D^b/E^b

Unison

changed,

At the

Unison

A^b/E^b C/E Fm Fm^7 D^bm^6/F^b

75

CD: 6

Divisi

mid - night cry

At the mid - night cry

when Je - sus comes a -

Divisi

75 A^b/E^b D^b/E^b Cm/E^b E^b7

gain. *Unison* And then those that re -

Unison

Ab D
E

(79) main shall be quick-ly changed,

(79) A C#m7 D D/E A/E C#E

(83) At the mid-night cry At the mid-night cry

(83) F#m F#m7 Dm6 F A/E

when Je - sus comes a - gain. Unison 15
 At the

Divisi *Divisi*

D E C^{dim} E⁷ F^m F^m7 D^m6
 E

mid - night cry *ff*
 At the mid - night cry *Unison* when Je - sus comes a - *ff*

(87) *A* *D*
 E E

cresc.

gain, *rit.* *Divisi* comes a - gain. (6)

Divisi

A *D* *D*6 *A*
 A A A

ff *rit.*

86

